

George McFadden

Worcester, Mass. & Syracuse, NY

- 1834 George McFadden is born in Scotland on May 23.
- 1854 Son William B. McFadden is born.
- 1872-1874 George partners with Frederick Beaumont to produce cornets that are copies of Isaac Fiske. The top photo at the right is marked "McFadden & Beaumont" and is a c.1872 copy of the 1868 patent valves. Beaumont was a former Fiske employee. Store at #19 Church St & #241 Main St.
- 1874 Second photo is the only known cornet with the triangular valve arrangement patented by Fiske in 1873 and copied by McFadden (all photos except 3 by Robb Stewart).
- 1874 McFadden moves to Syracuse, NY, #66 S. Salina (NLI).
- 1876 McFadden is a medal winner at the 1876 Centennial Exhibition at Philadelphia (bottom cornet).
- 1882 Moves to #71 S. Clinton; #71 & 73 starting in 1884 (NLI).
- 1886 McFadden's shop is at #71-73 Clinton St. Son William tries to commit suicide but ends up just shooting his arm. The parents say they wish he had succeeded. He is described as being a musical instrument maker (Syracuse newspaper).
- 1889 McFadden dies on May 19th in Syracuse. He is said to have produced about 500 instruments total. Widow Emma continues the music & repair shop (newspaper obit.).
- 1903 Emma dies & William is the administrator of the estate.
- 1904 William has a shop on the 4th floor of #401 to 407 South Clinton St, which he had occupied for years as a plant to manufacture band instruments. He was facing eviction.
- 1906 William awarded patent #861,305 for a freezer scraper.
- 1910 William awarded patent #1,056,109 for a vehicle wheel.
- 1913 William is at #100 Park Ave.
- 1918 The McFadden Band Instrument Shop runs an ad in the paper in February; located at #100 Park Ave.
- 1920 A July 9th article in the paper says that William went to Hamilton, Ontario to organize a plant to produce his patented wheels. He is living at #100 Park Ave and is referred to as a "former bandsman and manufacturer of band instruments."
- 1927 William dies March 29th.



Store Locations:

#66 South Salina: 1874-1882

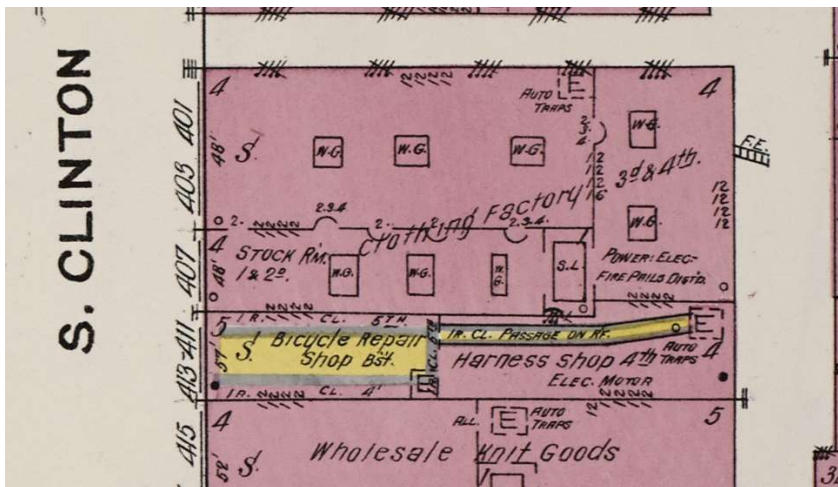
No information found. The 1892 Sanborn map starts at #100. North of this is the Erie canal.

#71 South Clinton: 1882-1889

No information found. This is one block away from Salina and the 1892 map shows numbers starting at #100.

#401-407 South Clinton: c.1904

Shown as clothing factory in this 1911 Sanborn map below. The area is now a parking garage.



#100 Park Ave: c.1913-1927

This was William's home and shop. The area is now a parking lot. Sanborn map below is from 1911.

